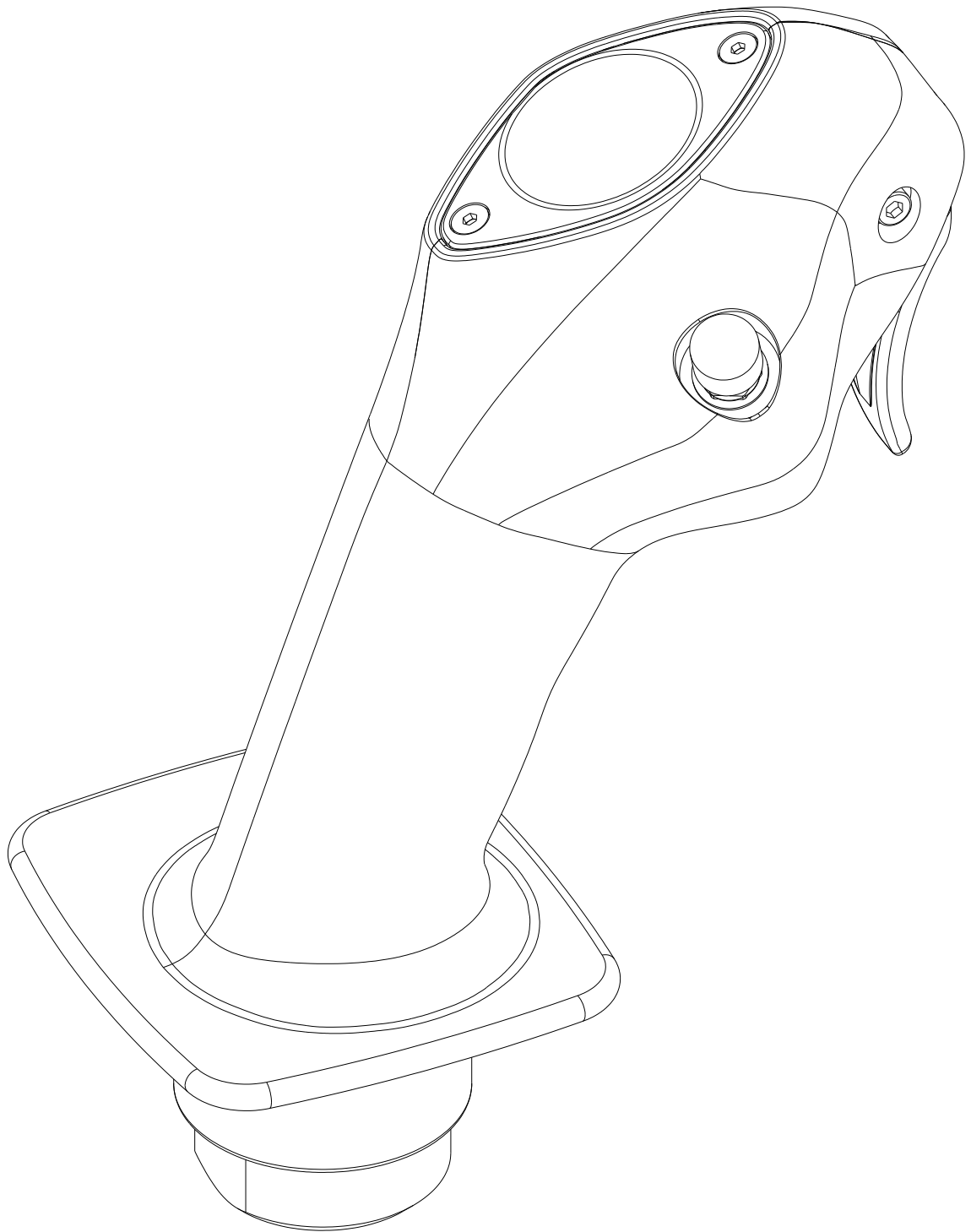


JOYSTICK GRIP OF 3XX

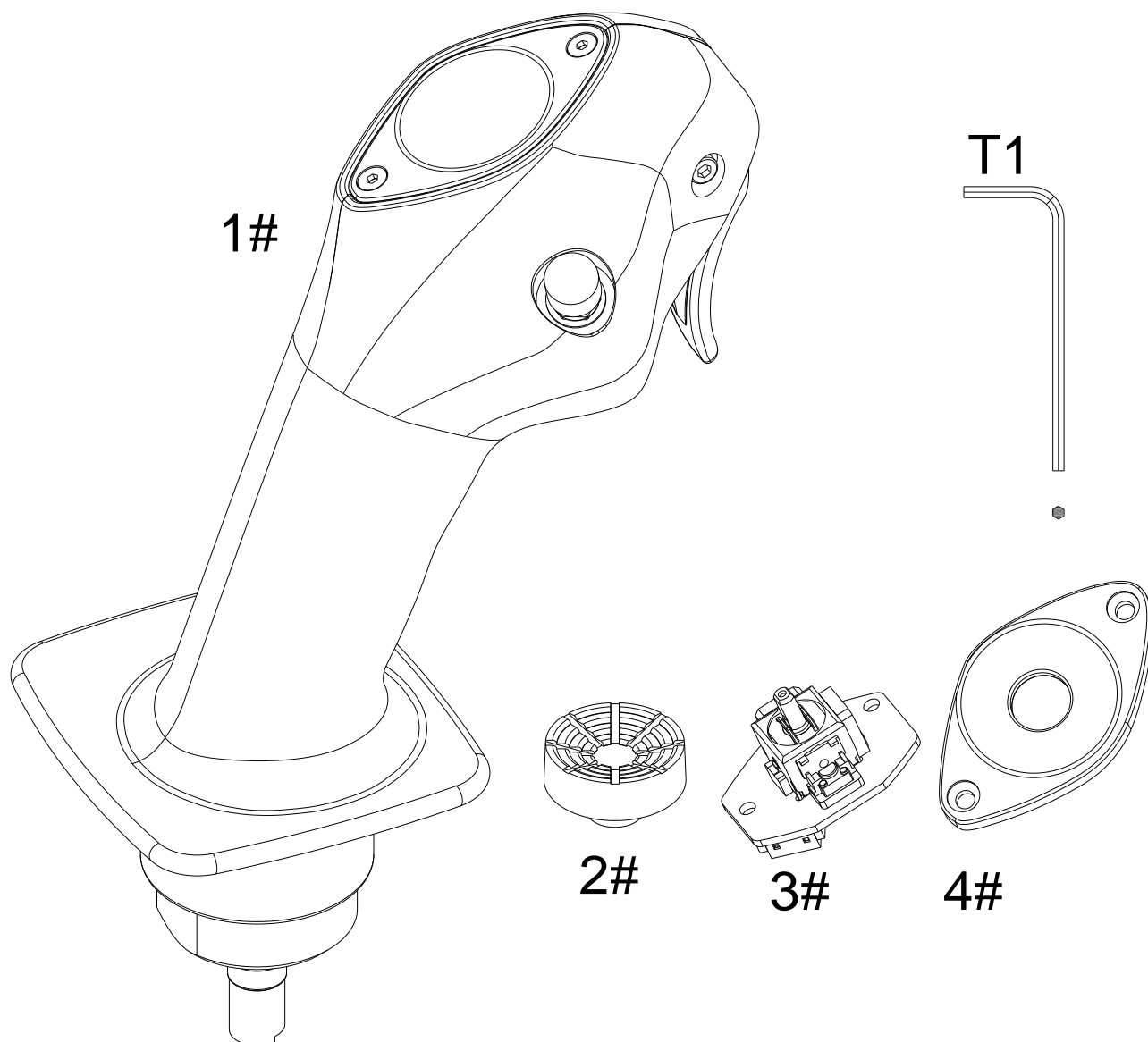
User Manual V1.0 2021.12



Contents :

What's in the box	1
1 Parameters.....	2
1.1 Operational parameter	2
1.2 Compatible	3
1.3 Dimensions	3
2 Function	3
2.1 button switch and functions.....	3
2.2 Adjustment.....	4
3 Parts assembly.....	4
3.1 Mini-joystick installation	4
3.2 Mini-joystick calibration	7
4 Connection parts	8
5 Base setup	9

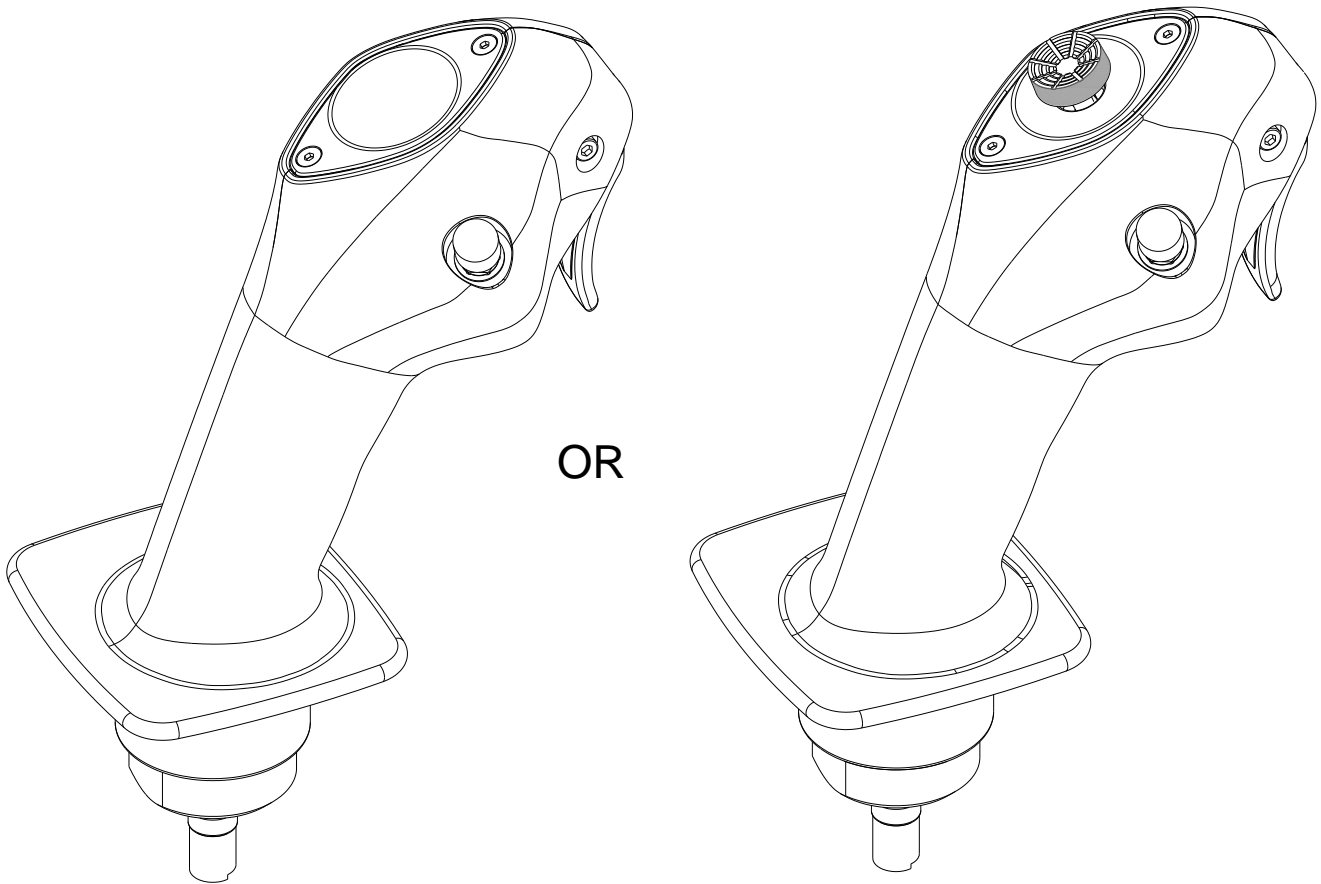
What's in the box



- | | |
|---|---|
| ① 3xx grip (1#) | 1 |
| ② Accessory pack (2# button hat, 3# mini-joystick, 4# Flat cover) | 1 |
| ③ Tool box (Allen wrench *1) | 1 |
| ④ Instruction manual | 1 |

1 Parameter

1.1 Performance Parameter



1 Two set up, can be use with mini-joystick.

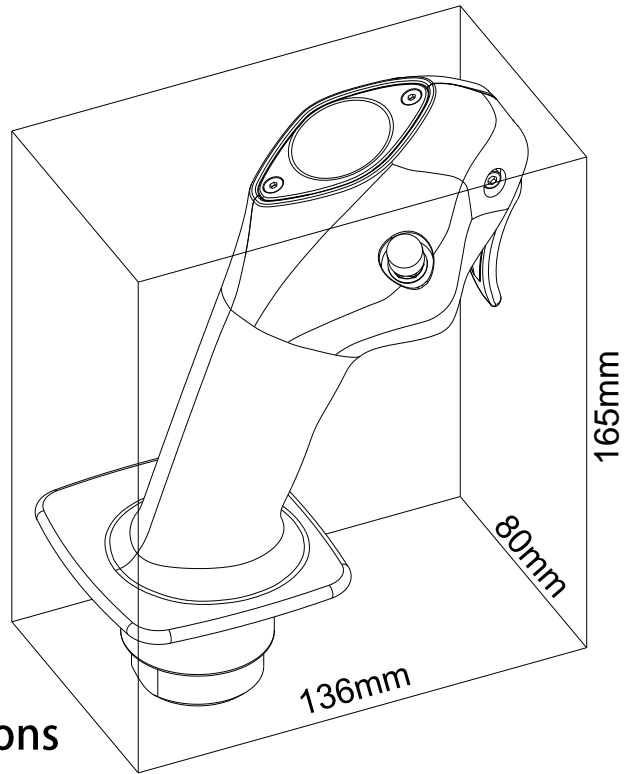
1.2 Compatible

- ① J1 Super Libra;
- ② J2 Orion base;
- ③ Do Not support extension. Do not support the Z axis module.

1.3 Dimension

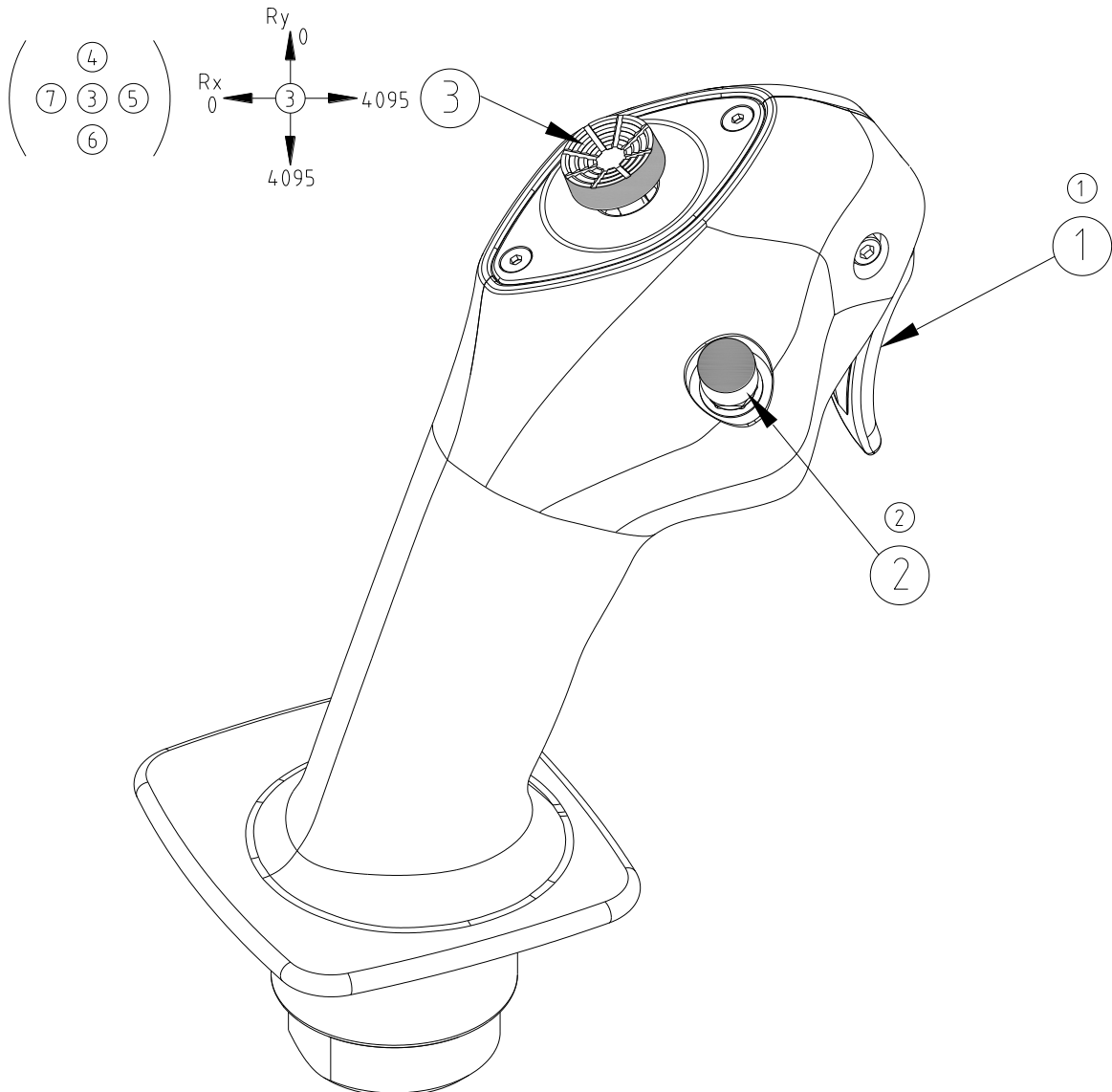
136mm*80mm*165mm ;

Mass 0.45Kg=1lb.



2 Function

2.1 button switch and functions

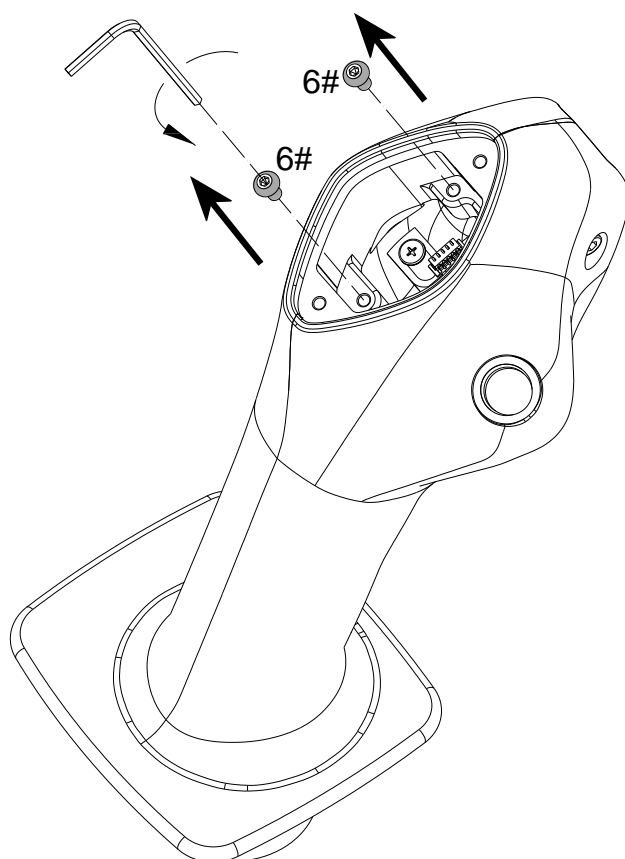
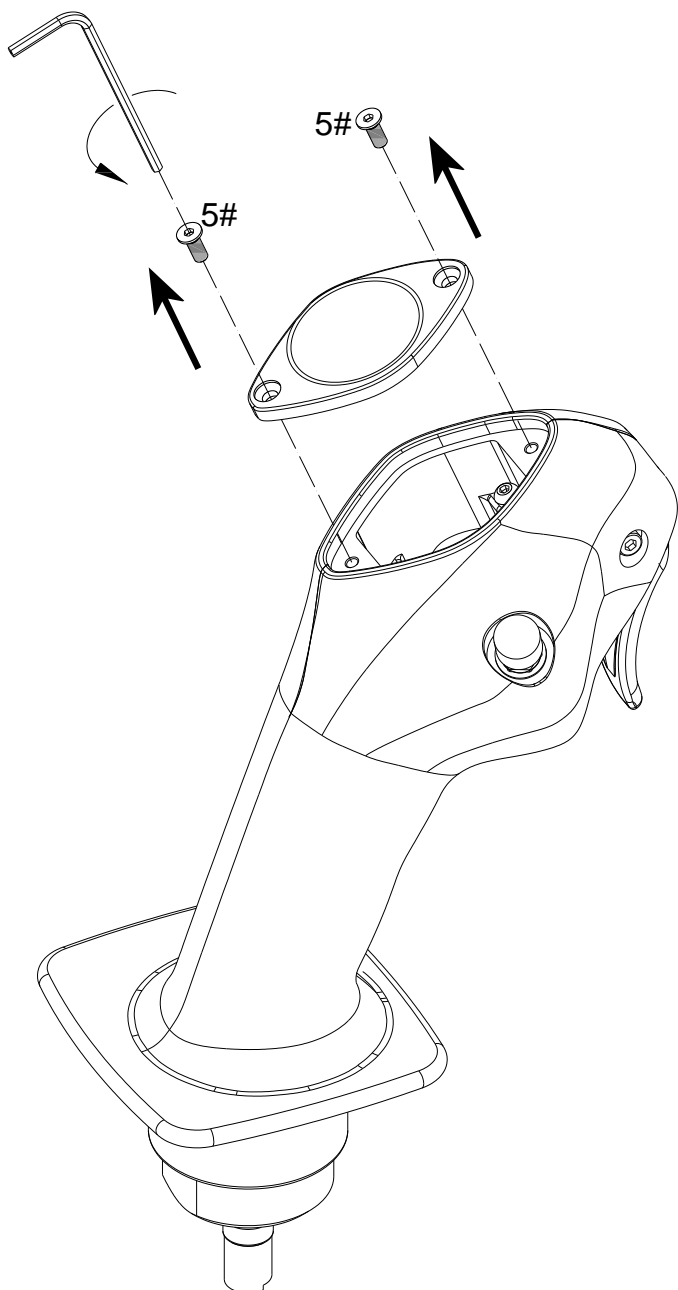


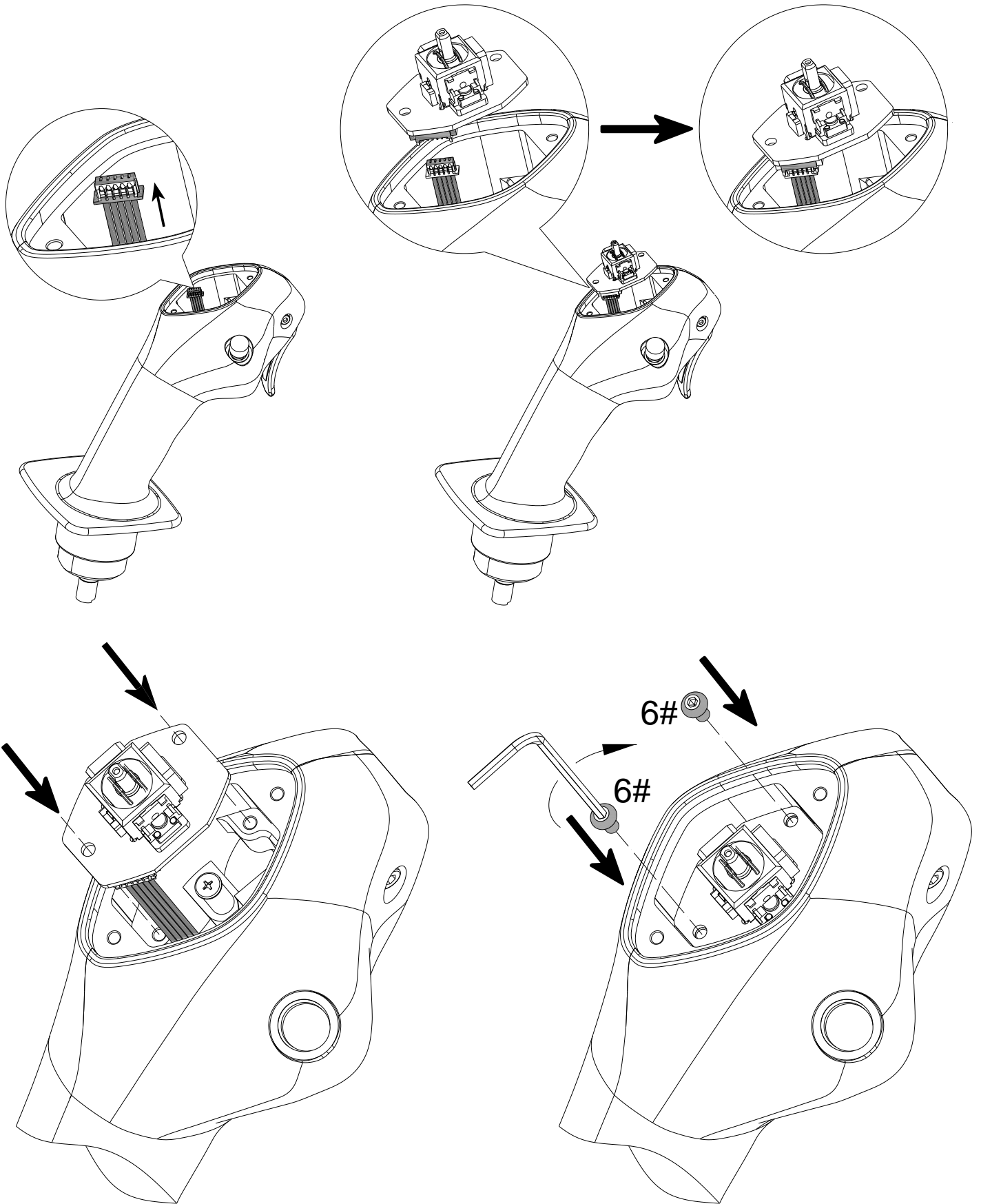
2.2 Adjustment

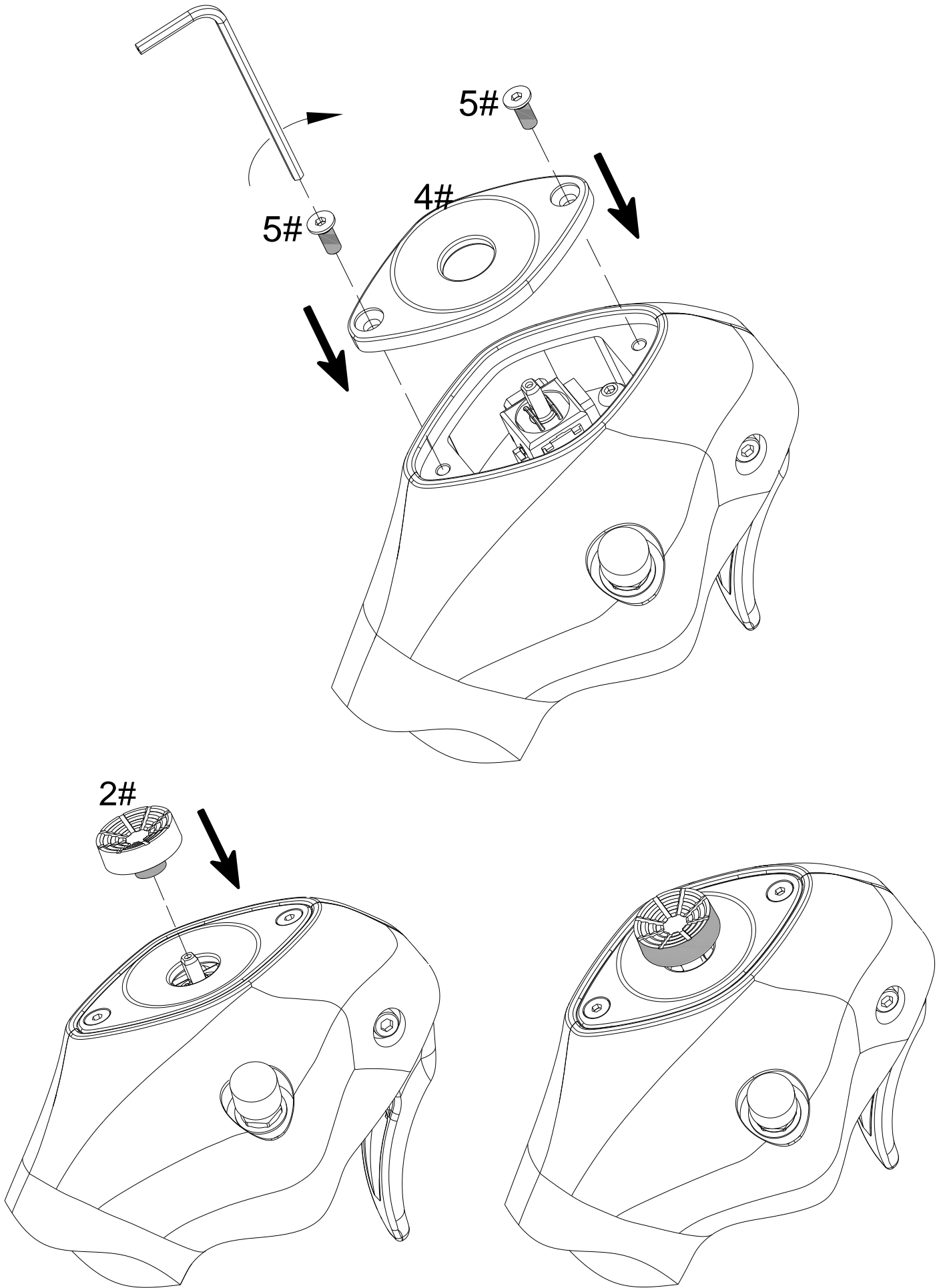
/

3 Parts assembly

3.1 Mini-joystick installation



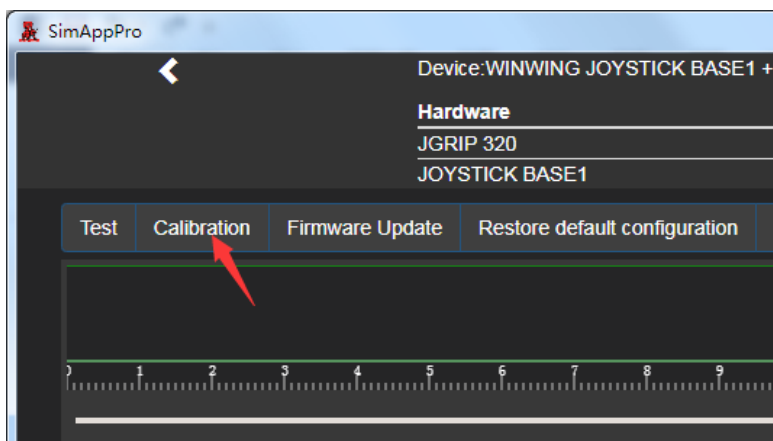
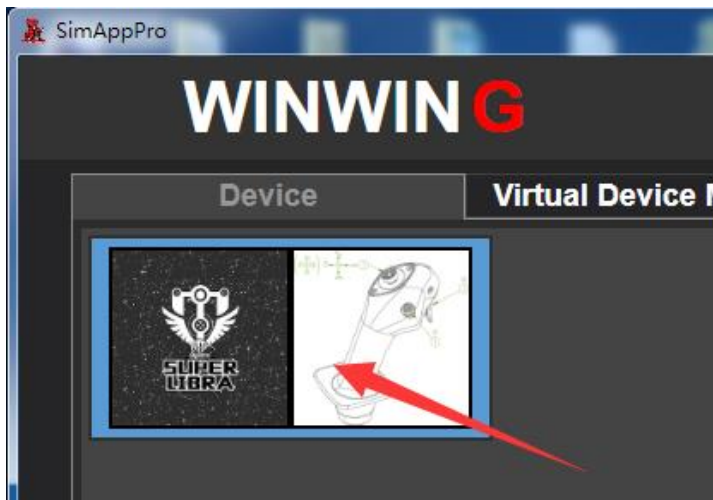




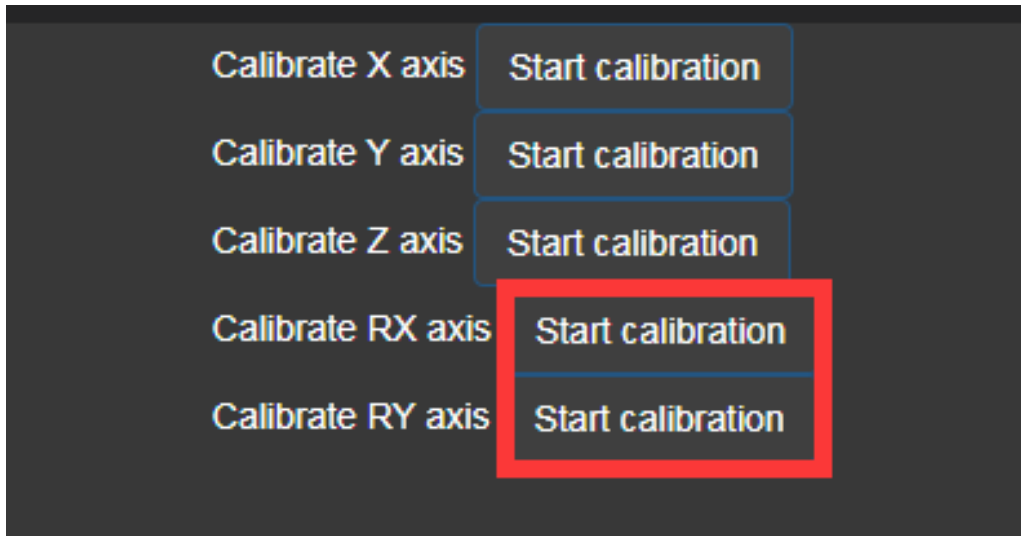
- ① unscrew the 5# screw and cover;
- ② Unscrew 2 of the 6# screw;
- ③ Pull the 5pin wire from the hole;
- ④ connect the 5pin wire into the mini-joystick base; (follow the direction as shown)
- ⑤ put the mini-joystick panel straight down;
- ⑥ tighten 6# screws;
- ⑦ put back the 4# Cover, tighten up the 5# screw;
- ⑧ put 2# hat on the joystick, make sure the hat goes down straight.

3.2 Mini-joystick calibration

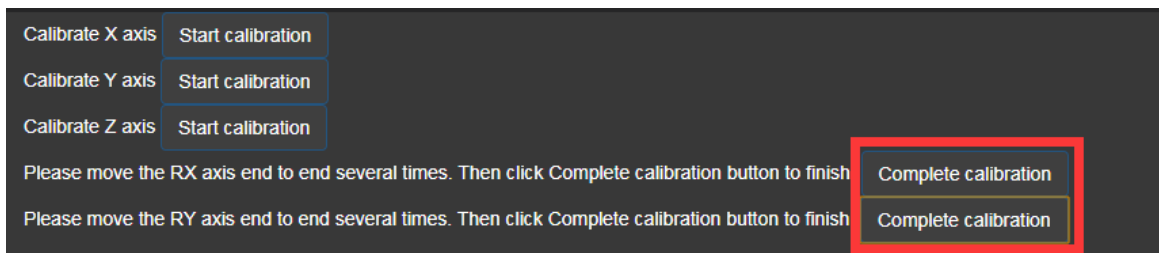
- ① Open SimApp pro. Click into the testing page. Click calibration item;



- ② In the calibration page, click the options in red square, move the mini-joystick full range;



- ③ After the full range movement. Click the options as shown;

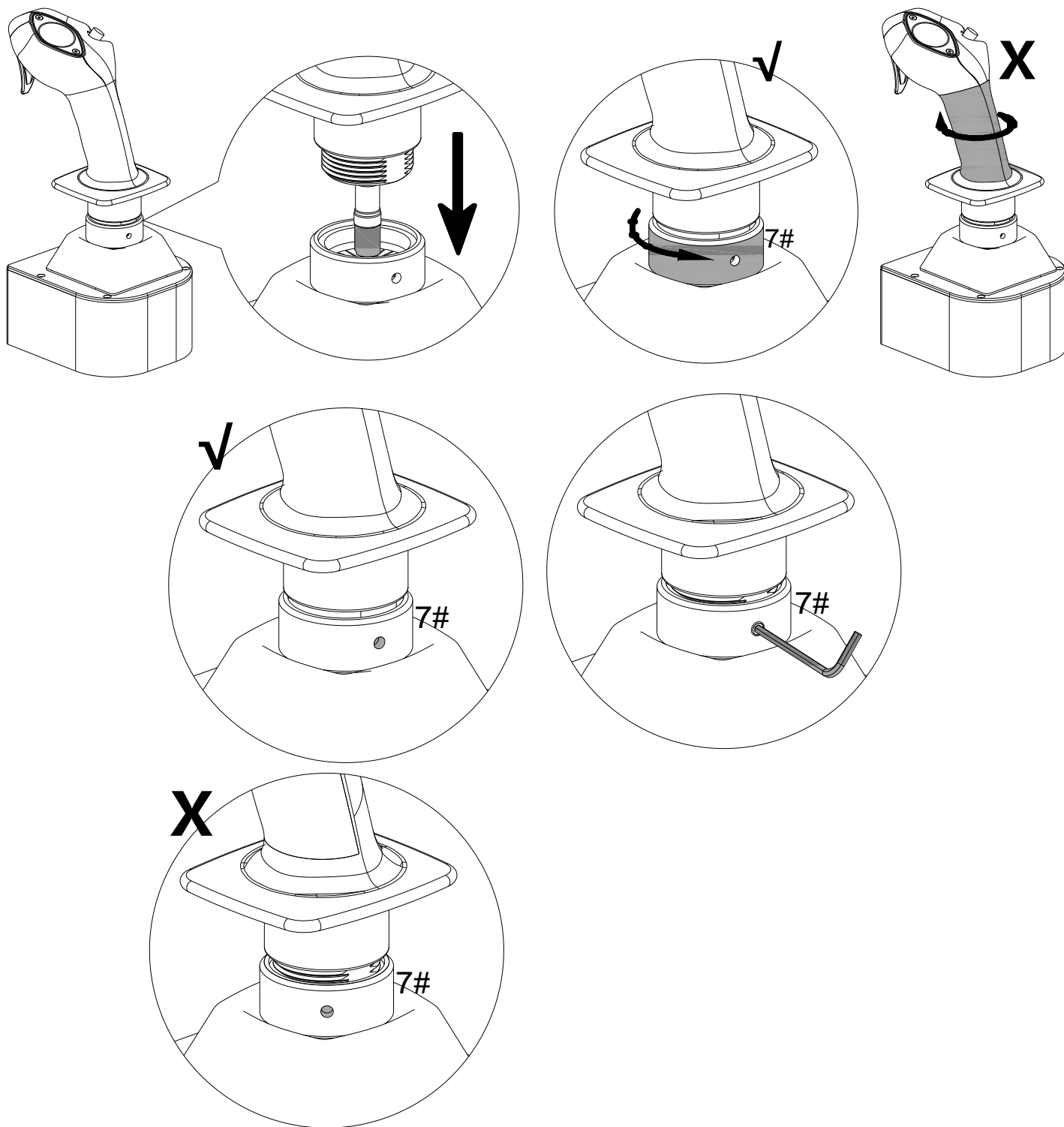


- ④ You have completed the calibration. return to the test page to observe the correct response.

4 Connection parts

/

5 Base setup



- ① Twist the grip into the proper angle, then connect the PS2 plug into the grip;
- ② Up-screw the 7# cover to tighten position. DO NOT TURN THE GRIP;
- ③ Check the the inspection hole on 7#. It should match the flat surface on the screw, if it doesn't, it means you need to continue up-screw the 7#;
- ④ Use allen wrench to uptight the screw on inspection hole.

*This is the final version of the manual,all update will be made online.

成都翼胜科技有限责任公司

WWW.WINWING.CN

INFO@WINWING.CN

High-tech International Enterprise Zone No.19 Building,Changshengqiao Road

1111#, Pidu District, Chengdu,China 610000